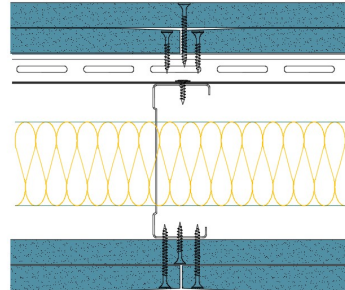


## RB92-B-60(50) - SPEEDLINE System Data Sheet - Version V1 (24-10-23)

SPEEDLINE 92mm 'C' Stud Partition with Resbar  
 @600mm Ctrs, with 2x BG Gyproc 15mm  
 SoundBloc each side, 50mm APR



### System Performance Breakdown

Fire Resistance:

BS476 Part 22:1987:

Test Ref & Date or Applied Ref & Report:

Max Height:

Thickness:

Duty Grade: BS 5234: Part 2:1992:

Sound Insulation:

**90/90 Minutes (Integrity/Insulation).**

**BTC 17440F - BRE Report P102396-1011A**

**Refer to Speedline Specification Clause**

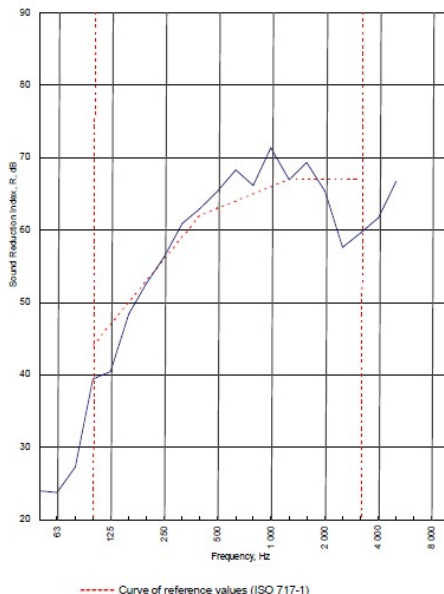
**170 mm.** (At Base Track, Excluding Finishes)

**Severe - Annexes A-F**

**63  $R_w$ dB, -7Ctr** Date Tested or Assessed Against - 06/02/2013

Test Code:  
H18046AA  
Test Date:  
06/02/2013

Freq. Hz	R dB
50	24.0
63	23.7
80	27.2
100	39.4
125	40.4
160	48.4
200	52.6
250	56.3
315	60.9
400	63.0
500	65.4
630	68.3
800	66.2
1000	71.4
1250	66.9
1600	69.3
2000	65.4
2500	57.6
3150	59.6
4000	61.7
5000	66.7
6300	
8000	
10000	



Rating according to BS EN ISO 717-1:1997  
 **$R_w$  (C;Ctr) = 63 (-3;-7) dB**  
 Max dev. 9.4 dB at 2500 Hz

Evaluation based on laboratory measurement results obtained by an engineering method

$C_{50-100}$ = -8 dB	$C_{50-500}$ = -8 dB	$C_{100-500}$ = -3 dB
$C_{125-160}$ = -20 dB	$C_{125-500}$ = -20 dB	$C_{125-2000}$ = -8 dB

TESTED AT ONE OF THE UKAS ACCREDITED LABORATORIES BELOW

- B.T.C (H-Ref on Graph)
- B.R.E
- AIRO
- S.R.L

Customer: Metsec plc Hepsec Division

BTC 18046A: Page 9 of 12

